

# TODAY WE WILL

GO OVER GRAD REQUIREMENTS &  
COLLEGE ENTRANCE REQUIREMENTS

REVIEW  
GRADUATION  
REQS AND  
COLLEGE  
ADMISSIONS  
REQUIREMENTS

REVIEW *YOUR*  
GRAD REQS AND  
LOOK AT WHAT  
*YOU* STILL NEED  
TO TAKE

START YOUR  
PLAN FOR NEXT  
YEAR

*Coming later  
this WEEK . . . .*

*Lesson 2:  
Programs and  
your high school  
plan*



# Your LHS Counseling Team

## *Who is your counselor?*

Your counselor is determined by your last name. Each counselor has 350-380 students.



**Ms. Kate Anderson**  
Last names A-E

andersonk785@edmonds.wednet.edu  
425.431.5207



**Ms. Nicole Shlomo**  
Last names F-Lo

shlomon544@edmonds.wednet.edu  
425.431.5206



**Mr. Bobby Hinnenkamp**  
Last names Lp-Rh

hinnenkampb@edmonds.wednet.edu  
425.431.5209



**Ms. Angelia Nivens**  
Last names Ri-Z

nivensa@edmonds.wednet.edu  
425.431.5204

## *How can my counselor help me?*

LHS Counselors are certified school counselors - we are generalists.

# Graduation Requirements

## ART



Graduation requirement:  
1.0 Credit

**Minimum 4 year college requirement:**  
1.0 Credit\*

\*California colleges want 1.0 art classes  
often including advanced art classes

## WORLD LANGUAGES

Not required for graduation  
Can use personal pathway of courses suited to  
your plans for after high school.

**Minimum 4 year college requirement:**  
2.0 – 3.0 Credit in one language

Stamp Test credits are often accepted, check  
with the college.



# Graduation Requirements

## ENGLISH

**Graduation requirement**

4.0 credits

**Minimum 4 year college requirement:**

4.0 credits

## SOCIAL STUDIES

**Graduation requirement:**

3.5 credits

WA State History requirement met in US History, AP US History or in Middle School

**Minimum 4 year college requirement:**

3.0 credits





# Graduation Requirements

## Math

### Graduation requirements:

3.0 credits

- Algebra 1
- Geometry
- 3rd Yr. Math: Financial Algebra, Algebra 2, or Algebra 2 Honors

IEP students follow their path established with their case manager

### Minimum 4 year college requirement:

3.0 credits

Algebra 1, Geometry and Algebra 2  
or Algebra 2 Honors required

Want “as much math as possible”

Require a Math or Math-based science in the senior year (Chemistry, Physics, Statistics, Pre-Calculus, Calculus, etc.)

# Graduation Requirements

## SCIENCE

**Graduation requirement**

3.0 credits

**Minimum 4 year college requirement:**

3.0 credits

- Physics course needed for Engineering majors
- WWU requires full year of chemistry or physics

## CAREER & TECH ED

**Graduation requirement:**

1.5 credits

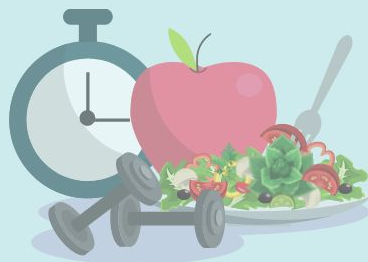
**Minimum 4 year college requirement:**

Not required



# Graduation Requirements

## HEALTH



**Graduation requirement:**

.5 credit

**Minimum 4 year college requirement:**

Not required



## PE

**Graduation requirement:**

1.5 credits

**Minimum 4 year college requirement:**

Not required

# Graduation Requirements

## PERSONAL FINANCE

**Graduation requirement:**

.5 credit

- Take in 12th grade
- Accounting 1 or Financial Algebra are equivalencies

**Minimum 4 year college requirement:**

Not required

## GENERAL ELECTIVES

**Graduation requirement:**

5.5 credits

**Minimum 4 year college requirement:**

Not required





# WHAT ELSE DO I HAVE TO DO TO GRADUATE?

1. Complete High School and Beyond Plan (HSBP) in Naviance
2. Pass State Tests - SBA English, Math, take Science
  - OR-
  - Pass 2.0 credits in one CTE Pathway
  - OR-
  - Pass college level English and math classes (CHS or Running Start)
  - OR-
  - Take/pass Bridge to College English and Math
  - OR-
  - Take/pass AP English/Math and/or earn passing grade on AP Tests

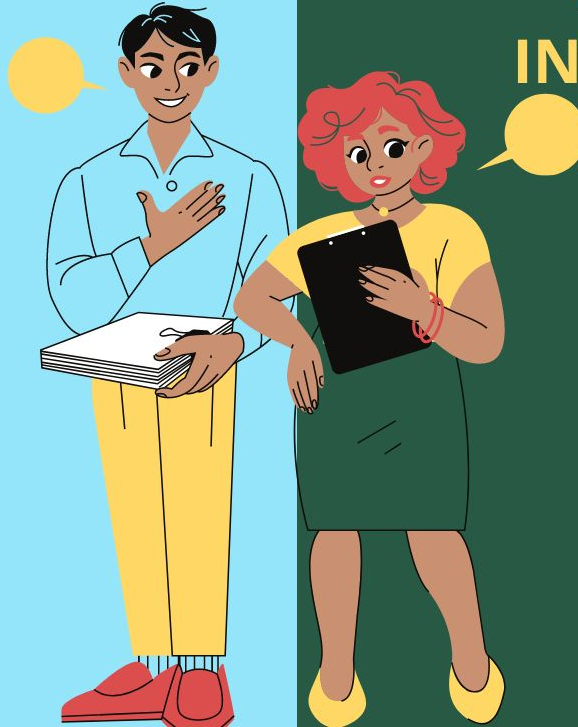


# GRADUATION CTE PATHWAYS

## 2.0 CREDITS IN ONE PROGRAM

### PATHWAYS AT LHS

ASL/Sign Language Interpreter  
Business and Marketing  
Comp. Science and Engineering  
Culinary Arts  
Education and Human Services  
Healthcare Professions (1.0)  
Horticulture  
Sports Medicine  
Visual Communications



### PATHWAYS THROUGH INTRADISTRICT CLASSES

Aerospace Manufacturing  
Architectural Design/CAD  
Automotive Technology  
Carpentry and Construction  
Healthcare Professions (1.0)

***ALL SNO-ISLE PROGRAMS***

[Career and Technical Pathways Home](#)

**OKAY, SO NOW YOU  
KNOW WHAT IS REQUIRED  
TO GRADUATE**

But how are *you*  
doing on *your*  
requirements?





# HOW TO VIEW YOUR GRAD REQUIREMENTS

Edmonds School District Select a School Select Language Search...

**LYNNWOOD**  
High School

18218 North Road, Bothell, WA 98012  
425-431-7520

Class of 2022 Information About Academics Student Life Library Families Calendar

Welcome to Lynnwood High School

**24 FEB** ATHLETICS SCHEDULE  
**25 FEB** ATHLETICS SCHEDULE  
**26 FEB** ATHLETICS SCHEDULE  
**28 FEB** ATHLETICS SCHEDULE  
**28 FEB** NE QUAD BAND WORKSHOP

**FULL CALENDAR**

COVID-19 Skyward Staff Directory Menus Digital Tools Naviance Enrollment Payments eFlyers Report a Concern

Questions / Feedback

Go to the  
LHS  
homepage  
and click on  
Skyward





# Login to Skyward using your ID and password



Edmonds School District  
Equity. Engagement. Excellence.

Login ID:

Password:

Sign In

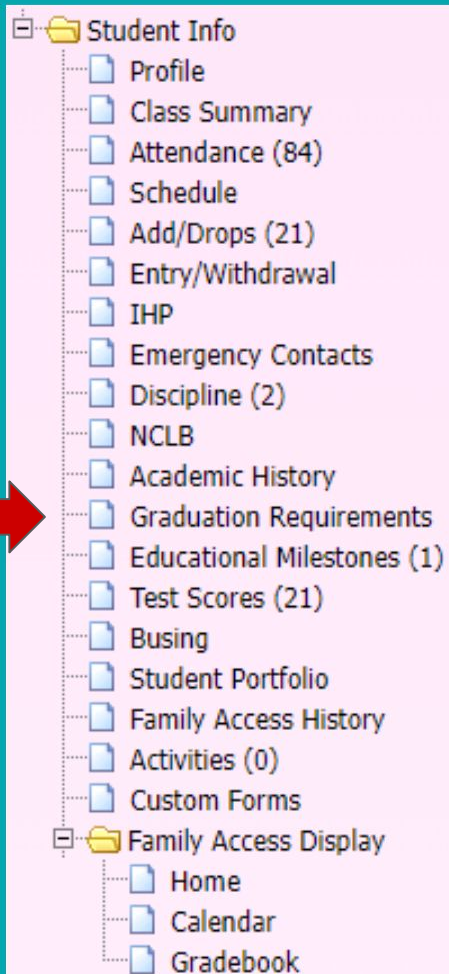
[Forgot your Login/Password?](#)

05.21.10.00.11

Login Area:

All Areas





# Click on "Graduation Requirements"



# HOW TO READ THE GRADUATION REQUIREMENTS SCREEN

1. "In progress" means the classes you are in this year.
2. The "Remaining" column is what you still need to complete.
3. If the "In Progress" and "Remaining" are the same amount, this means you are currently taking all that you need.
4. Once you pass the "in progress" classes, they will move to the "Completed" column
5. If a class is remaining, and not in progress - you need to take/pass this course to graduate

**DISREGARD THE "FUTURE" COLUMN**



# ON TRACK TO GRADUATE?

**You should have...**



Credits Earned  
9th Graders



Credits Earned  
10th Graders



Credits Earned  
11th Graders

**If you have not earned these credits, please contact your counselor to talk about what credit retrieval options will be best for you.**




# 11th Grader - Grad Requirements in Skyward



Requirement Areas	Required	Comp	In Prog	Scheduled 2022-23	CTE Equiv	Remain	Status
<b>Total Credits</b> <a href="#">Show All Courses</a>	<b>24.000</b>	<b>15.000</b>	<b>3.000</b>			<b>9.000</b>	<b>In Progress</b>
<b>Arts</b> <a href="#">Show Courses</a>	<b>1.000</b>	<b>1.000</b>					<b>Complete</b>
<b>English</b>	<b>4.000</b>	<b>2.500</b>	<b>0.500</b>			<b>1.500</b>	<b>In Progress</b>
English 9 <a href="#">Show Courses</a>	1.000	1.000					Complete
English 10 <a href="#">Show Courses</a>	1.000	1.000					Complete
English 11 <a href="#">Show Courses</a>	1.000	0.500	0.500			0.500	In Progress
English 12	1.000					1.000	
<b>Social Studies</b>	<b>3.500</b>	<b>2.000</b>	<b>0.500</b>			<b>1.500</b>	<b>In Progress</b>
World History 9 <a href="#">Show Courses</a>	0.500	0.500					Complete
World History 10 <a href="#">Show Courses</a>	1.000	1.000					Complete
US History <a href="#">Show Courses</a>	1.000	0.500	0.500			0.500	In Progress
Senior History	1.000					1.000	
<b>Math</b>	<b>3.000</b>	<b>2.500</b>	<b>0.500</b>			<b>0.500</b>	<b>In Progress</b>
Integrated Math 1 / Algebra <a href="#">Show Courses</a>	1.000	1.000					Complete
Integrated Math 2 / Geometry <a href="#">Show Courses</a>	1.000	1.000					Complete
Math 3rd Yr <a href="#">Show Courses</a>	1.000	0.500	0.500			0.500	In Progress
<b>Science</b> <a href="#">Show Courses</a>	<b>3.000</b>	<b>2.500</b>	<b>0.500</b>			<b>0.500</b>	<b>In Progress</b>
<b>Health &amp; Fitness</b>	<b>2.000</b>	<b>2.000</b>					<b>Complete</b>
Physical Education <a href="#">Show Courses</a>	1.500	1.500					Complete
Health <a href="#">Show Courses</a>	0.500	0.500					Complete
<b>Career &amp; Technical Education</b> <a href="#">Show Courses</a>	<b>1.500</b>	<b>1.500</b>					<b>Complete</b>
<b>Personal Finance</b>	<b>0.500</b>					<b>0.500</b>	
<b>General Electives</b> <a href="#">Show Courses</a>	<b>5.500</b>	<b>1.000</b>	<b>1.000</b>			<b>4.500</b>	<b>In Progress</b>

# WHAT DO I DO NOW?



Review your Graduation Requirements in Skyward and use them to figure out what classes you need to take next year.



It is your responsibility to make sure you are meeting all graduation requirements!



Refer back to these requirements as you go through the registration process.



# Remember- If you want to go to a 4 Year College or University You Need:

- Minimally 2 years/credits of one world language or ASL
- World Language test credits are also accepted
- Take math or a math-based science class in senior year



# REGISTRATION TIMELINE

**1. GRADUATION REQUIREMENT LESSON - WHAT CLASSES/CREDITS DO YOU NEED TO GRADUATE? - Today's lesson!**

**2. LESSON ON HIGH SCHOOL PROGRAMS**

- MARCH 11TH IN ADVISORY

**3.YOUR 4-YEAR PLAN - IF YOU HAVEN'T DONE IT ALREADY - DUE MARCH 14TH!**

**4. REGISTRATION INPUT AND SUBMISSION OF FOUR YEAR COURSE PLAN IN ENGLISH CLASSES**

- MARCH 15TH - CURRENT 11TH GRADERS
- MARCH 16TH - CURRENT 10TH GRADERS
- MARCH 17TH - CURRENT 9TH GRADERS

**IF STUDENTS DO NOT INPUT THEIR REQUESTS BY THE END OF DAY ON MONDAY, MARCH 21ST, YOUR COUNSELOR WILL HAVE TO DEVELOP A SCHEDULE FOR YOU BASED ON YOUR GRADUATION REQUIREMENTS AND WILL NOT BE CHANGED.**



**COUNSELING CENTER  
DROP IN TIME  
EVERY MONDAY-THURSDAY  
DURING LUNCH**

