

# DEVELOPING YOUR HIGH SCHOOL PLAN AND COURSE SELECTION FOR 2023-24



# Your LHS Counseling Team

## *Who is your counselor?*

Your counselor is determined by your last name. Each counselor has 300-320 students.

**Who is your counselor?** Your counselor is determined by your last name. Each counselor serves around 310-320 students. All emails end in @edmonds.wednet.edu



Ms. Kate Anderson  
Last names A-D  
andersonk785@.....



Mr. Ryan Hutchinson  
Last names E-Han  
hutchinsonr781@.....



Mr. Dylan Kochta  
Last names Har-Mb  
kochtad389@.....



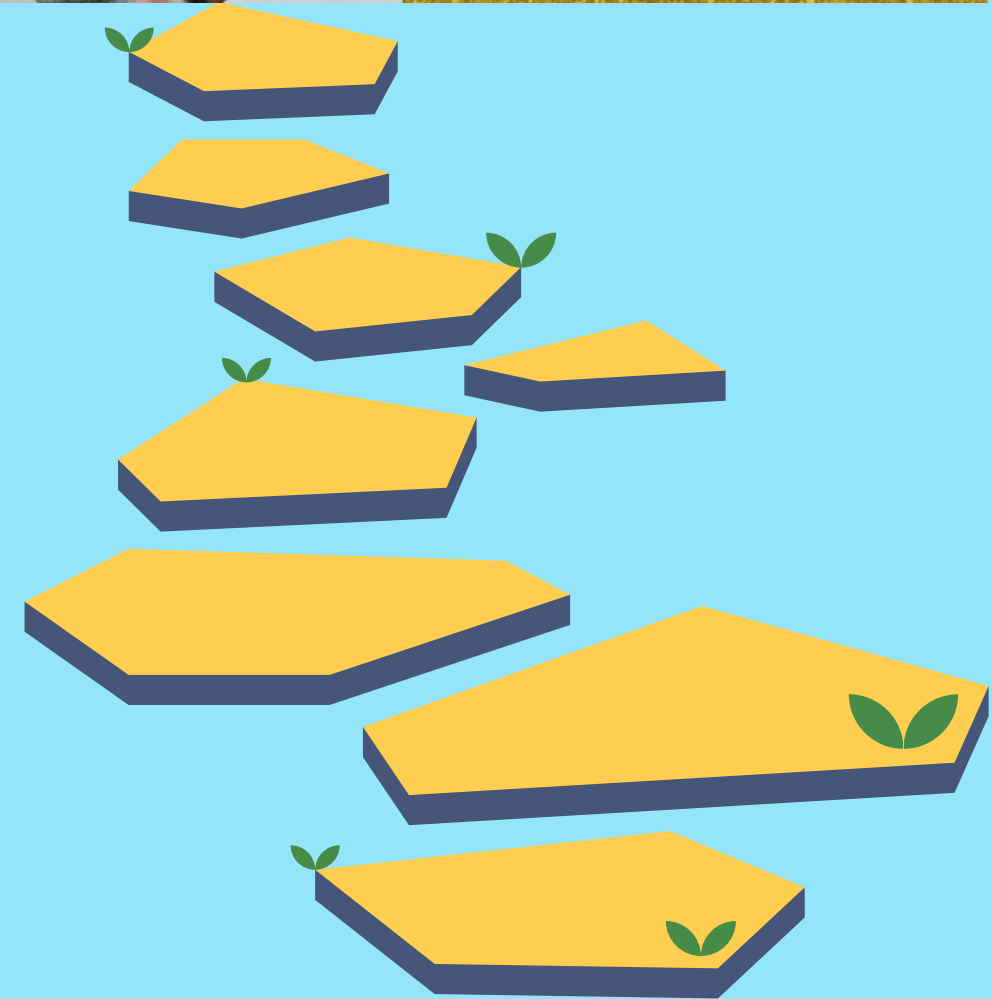
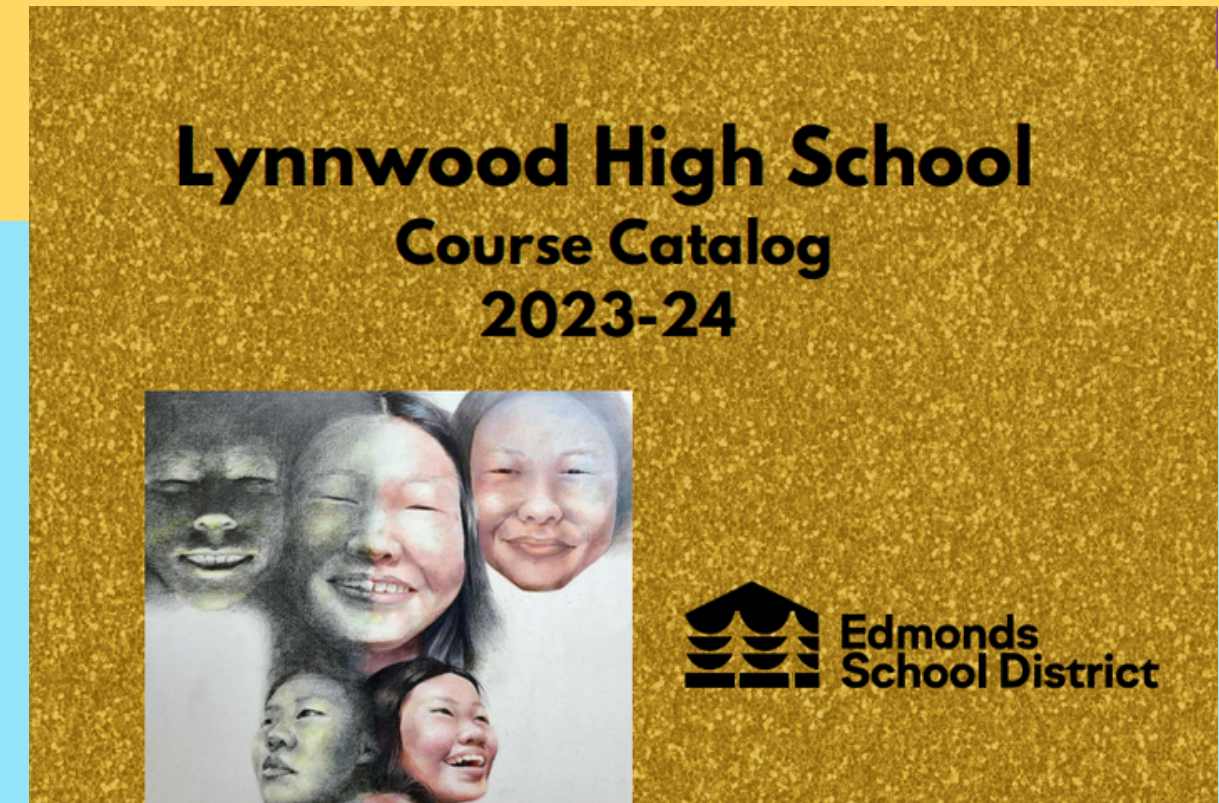
Mr. Bobby Hinnenkamp  
Last names Mc-San  
hinnenkampb@....



Ms. Angelia Nivens  
Last names Sar-Z  
nivensa@.....

# CHOOSING CLASSES

1. There are many classes and programs available.
2. Identify your strengths and areas of interest in school.
3. What is your goal for after high school?
4. Do what is right for you.
5. Refer back to your Graduation Requirements in Skyward.



# (Current 9th and 10th Graders) **AVID Program - Advancement Via Individual Determination**

**Want to attend a 4 year college or university and not sure how to get there?**

- Year-long elective course
- College-preparatory curriculum
- Tutor-facilitated study groups
- Motivational activities
- Academic success skills





# LHS STEAM Program

STEAM integrates traditional STEM (Science, Technology, Engineering and Math) skills with the arts.

Learn to: Solve novel problems of the future.

Design, investigate, reason, think and collaborate.



Pathways in:

Environmental Science

Advanced Manufacturing

Computer Science &  
Engineering

Health Sciences

# COLLEGE CREDIT IN HIGH SCHOOL

Many classes offer the potential for college credit by simply doing well.



- College in the High School classes
- Dual credit Career and Tech classes
- Many Advanced Placement courses

# CAREER AND TECHNICAL CLASSES AND COLLEGE CREDIT

Some of our CTE Dual Credit Classes offered at LHS:



MICROSOFT IT ACADEMY    MARKETING

ASL    CHEF    PHOTOGRAPHY

HORTICULTURE    SPORTS MEDICINE    BIOTECHNOLOGY

INTRO TO ENG DESIGN

WHEN YOU TAKE ONE OF THESE CLASSES, YOUR TEACHER WILL HELP YOU SIGN UP FOR COLLEGE CREDIT.

# INTRADISTRICT CLASSES - 2 PERIOD BLOCKS

Aerospace Manufacturing & Applied Engineering - at LHS

Architectural Design/CAD - at EWHS

Automotive Technology - at MDH

Carpentry and Construction - at MTHS

Healthcare Professions - at MDH

**INTRADISTRICT INFO**





# COLLEGE IN THE HIGH SCHOOL COURSES



**ASL, SPANISH, FRENCH**

**ETHNIC STUDIES**

**AP WORLD HISTORY**

**US HISTORY**

**PRE-CALCULUS**

**FINANCIAL ALGEBRA**

**WHEN YOU TAKE ONE OF THESE CLASSES, YOUR TEACHER WILL HELP YOU SIGN UP FOR COLLEGE CREDIT.**

# ADVANCED PLACEMENT COURSES

- Challenging college-level classes prepare you for exams at the end of the year.
- Students are not allowed to drop these classes unless extreme circumstance.
- Doing well (3 or higher) on exams can result in college credit or advanced standing once you enroll in college after high school.
- Significant tuition savings.



# AP COURSES AT LHS

- Art Studio: 2-D Design (AP Photography)
- AP 3-D Art
- AP English: English Language and Composition(11th), English Literature and Composition(12th)
- AP History: World History (10th), US History(11th), US Government and Politics
- Math and Computer Science: Calculus AB and BC, Statistics, Computer Science
- Sciences: Biology, Physics and Environmental Science



# PLANNING ON TAKING CLASSES THROUGH RUNNING START?


- Running Start is for independent, self-disciplined 11th and 12th graders.
- Learn more by visiting the Running Start websites on each community college's website.  
<https://www.edmonds.edu/highschool/runningstart/>
- Minimum high school GPA of 2.5 or SBA score of 3 in ELA or Math
- Treated as adults at the college. You provide your own transportation.
- The program pays tuition, families pay for fees and books; some programs are available to help
- Grades earned at college are for a lifetime, can affect ability to qualify for financial aid after graduating. Must maintain a "C" or 2.0 GPA.

New RS students - for now sign up for a full load of classes at LHS. Enter **RSA000** as a course request in Skyward during registration

Current RS students, enter **RSA 000** and sign up for ONLY the classes you want to take at LHS.



# HOW TO ENTER YOUR CLASS REQUESTS IN SKYWARD



Edmonds School District  
Equity. Engagement. Excellence.

Login ID:

Password:

[Sign In](#)

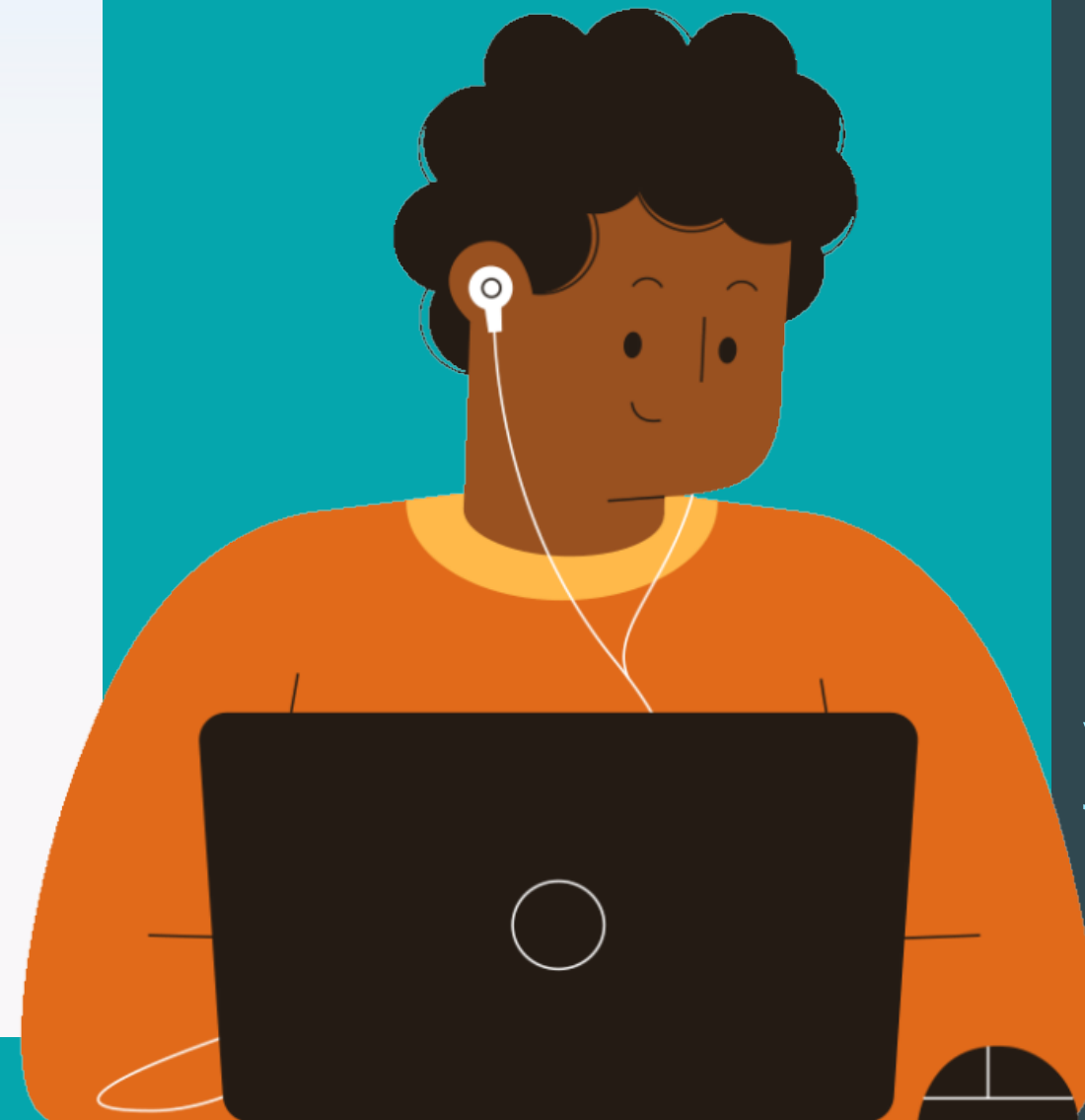
[Forgot your Login/Password?](#)

05.21.10.00.10

Login Area:

*Equity. Engagement. Excellence.*

© 2022 Skyward, Inc. All rights reserved.



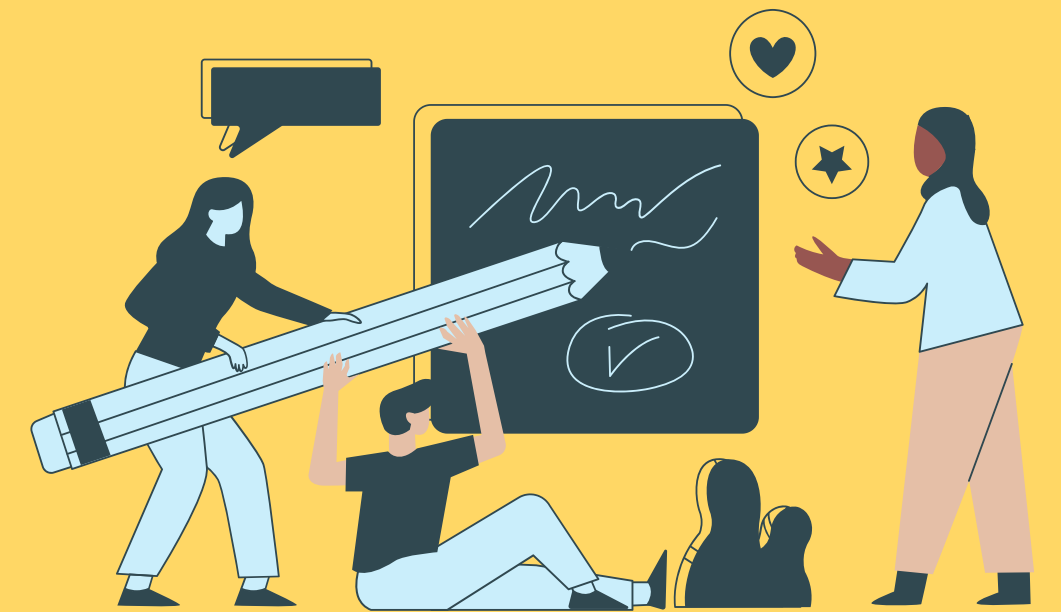
On March 14th-16th, you will input your course requests for next year on your Chromebook.

Have your fully-charged computer and your Registration Form ready that day.



# QUESTIONS ABOUT REGISTRATION?

**COUNSELORS WILL BE IN  
THE AGORA MARCH 6-13TH  
DURING LUNCH TO ANSWER  
QUESTIONS!**



**PLAN CAREFULLY!**

**WE USE YOUR REQUESTS TO PLAN  
CLASSES. WE CANNOT ACCOMMODATE  
PREFERENCE CHANGES ONCE THE  
SCHEDULE IS SET.**

## **Questions to think about as you register for classes**

- 1. What credits do you need to satisfy toward graduation?**
- 2. What are your strengths?**
- 3. What courses/programs might help you further develop these strengths?**
- 4. What courses/programs might help you improve your weaknesses?**
- 5. What programs do you want to know more about?**
- 6. What courses will get you to where you want to go after high school?**